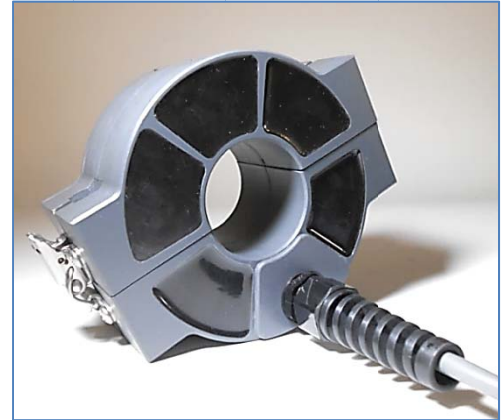


## MODEL (SERIES) 3AS-20.50-1 HARVEST CURRENT TRANSFORMER SYSTEMS

- Large Variety of Sizes – Customized For Each Unique Application
- Current Transformer Designed for Wide Input Current Ranges
- External Power Supply Converter for DC Voltage Output.
- Water Tight Connectors with Optional Cable Lengths
- Epoxy Casted for Extreme Environmental Conditions



The Model (series) 3AS Harvest Current Transformers can be provided either as a solid non-split core or a split-core style (for insulated electrical conductors only). Either version will depend on the voltage insulation rating of the conductor on which the current transformer will be mounted. Each system is custom made using a single basic design but complete specifications must be determined before a final system can be provided.

### Example: Model 3AS-20.50-1

Shown here is a system provided for a low current range. Input Range set for 20A to 50A into the Split Current Transformer provided with a power supply that provides a regulated 5VDC @500mA (Max).

To determine the feasibility or to order your system , Sentran Corporation will require the following:

1. Input Current Range -- minimum to maximum.
2. Insulation rating of the electrical conductor (power line).
3. The outside dimensions of the power line.
4. Environmental conditions (example IP-68 or?).
5. Voltage and current output of the DC power supply.
6. Any special connectors or cable (length is important).
7. Maximum weight and outside dimensions.
8. Any special mounting requirements.
9. The quantity that you plan to order.



Model 3AST with Multi Tap Controller  
and AC to DC converter Power Supply.



Version Shown with Power Supply

**SENTRAN**  
CORPORATION

1545 Commercial St NE, Salem, Oregon, USA 97301

[sales@sentrancorp.com](mailto:sales@sentrancorp.com) 1-503-370-7377 1-888-390-2621