

Model Series 5NO5 & 5NOC Outdoor Split or Solid Core Current Transformer 100% Water Proof IP68 Rated



- Meant for measuring ground wire currents
- Weather proof NEMA Type 6P / IP68W
- Choose and window size from table or custom
- Non-corrosive magnetic core
- Removable or Hinged, Split-Top or Solid (non-split core)
- Potted and encapsulated for outdoor use
- Any current range 50/60Hz

How to order: 5NO5 - Input: Output – Window
Example: 5NO5-XXXX:1A-WxL
XXX=Input Current, Y=1A Output,
WxL =Window width (top bar) and length

General Description:

The 5NO5 & 5NOC are outdoor rated current transformer CT that uses a special non-corrosive core. The standard 5NO5 split core model has a removable top bar with plastic screws or lock pins to secure the top. A hinged top style is available as special order. Non-split 5NOC is also available. The current transformer is potted and has no exposed internal parts, except the tilt top for the split-core models. An 8 foot, twisted pair, 16WG cable with an overall sheath is included. Shielded cables can also be provided as requested. The standard output signal is 1A; other sizes and outputs available upon request.

Specifications

Environmental NEMA Type 6P / IP68W
Rated primary currentselect any up to15000A
Rated frequency 50/60Hz
Rated standard output (select with order)..... 1A or 5A
Accuracy at Full ScaleStandard: Class 1.0
 per IEC 61869 Table 201. Class 0.5 Is an option.
Temperature, Operating.....-40 to 70°C
Phase shift across CT Less than 1 degree
Output impedance, ZoutSpecify your burden
Rated insulation level 600VAC, class 105
Dimensions.....Specify & depends on your burden
Signal cable, 8 foot long standard.....twisted pair B/W, 16AWG, sheathed

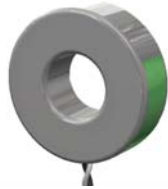
Due to the many sizes available, the dimensions will change according to the application, instrument load (burden) and your requirements. Please provide this information when order.

Most Popular Sizes (as of November 2017)

Customized Sizes always available

Model Numbers	Input Full Load Current	Output Current	Window Opening	VA Burden	Lead Length
5NO5-100:5A-1.5x1.5 (8ft)	100A	5A	1.5"X1.5"	0.24	8 feet
5NO5-200:5A-1.5X1.5 (24ft)	200A	5A	1.5"X1.5"	0.24	24 feet
5NO5-200:5A-1.5x1.5 (16ft)	200A	5A	1.5"x1.5"	0.24	16 feet
5NO5-400:5A-2.0x2.0 (8ft)	400A	5A	2.0x2.0	10	8 feet
5NO5-600:420mA-1.5 (8ft)	600A	4-20mA	1.5	Loop Res	8 feet

SAMPLES OF OTHER 5NO5 STYLES TO FIT YOUR APPLICATION



1545 Commercial St NE, Salem, Oregon, USA 97301
sales@sentrancorp.com 1-503-370-7377 1-888-390-2621