

Model 5ARP Series

Relay Protection

Current Transformers

- C57.13-2008
- Custom window sizes
- C10 to C800 rated
- Ruggedized construction
- Solid Outdoor Potted Available
- Meets UL2808 XOBA



The Model Series 5ARP are rugged split, solid or toroidal shaped relay protection instrument current transformers made to customer requirements. The current transformers meet the strict requirements of UL2808 if lead wires are provided. Underwriters Laboratories does not allow UL Listed current transformers with terminals at this time. Sentran Corporation can provide non-UL listed current transformers with terminals if required (see illustration below).

Specifications:

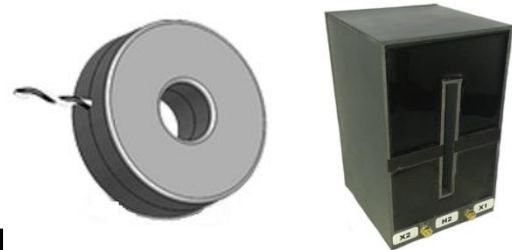
Input Current.....AC current, sine wave, single phase 50/60Hz
Voltage Rating.....600VAC, tested CAT IV Pollution 3, Overvoltage per UL2808
Accuracy and Size.....See chart below
Bandwidth.....40Hz to 60Hz
Phase Relationship.....Label to face current source, white wire is positive output. H1 to source, X1 high
Temperature Range.....-40°C to 70°C
Construction.....Polycarbonate (200°C) Tested to UL2808 & CAN/CSA C22.2 No. 61010-1-12
Lead Wires.....8ft. black and white, 12AWG, 14AWG or 12 or 14 AWG MTW, UL1015

Current Transformer Relaying Accuracy

All relaying accuracies are +/- 10% maximum ratio error when there is 20x current flowing in the CT secondary (20 x 5A = 100A). There are two designations, which are %C+ and %T+. Designation %C+ stands for %Calculate+. This type of CT performance can be accurately calculated. The %T+ designation stands for %Test+. This type of CT performance must be verified by testing. The following table gives the relaying accuracy designations:

| Designation | Burden | Power Factor | Secondary Voltage |
|--------------|--------|--------------|-------------------|
| C10 or T10 | 0.1Ω | 0.5 | 10V |
| C20 or T20 | 0.2Ω | 0.5 | 20V |
| C50 or T50 | 0.5Ω | 0.5 | 50V |
| C100 or T100 | 1.0Ω | 0.5 | 100V |
| C200 or T200 | 2.0Ω | 0.5 | 200V |
| C400 or T400 | 4.0Ω | 0.5 | 400V |
| C800 or T800 | 8.0Ω | 0.5 | 800V |

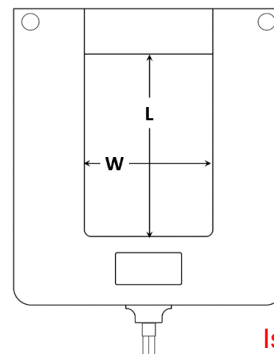
Types of Relay Protection CTs



How to Order

Basic Part Number: 5ARP-XX:YY-WxL (C00)
 XX = Input Current
 YY = either 1A or 5A output
 W = Width
 L = Length
 00 = Relay Designation
 Example: 5ARP-2000:5A-4x4.5+(C50)
 If a toroidal version is wanted, replace %WxL+ with the I.D
 Example: 5ARP-1000:5A-3+(C100)

IMPORTANT: Provide desired lead lengths (8ft standard if no lengths are provided) and Burden (VA) of the meter.



Issued: April 26, 2017