

Model LN2

Precision Split-Core Current Transformer UL Recognized to C57.13-2008 and CSA C60044-1

- AC Voltage & Current Output
- Accuracy - 0.5%
- Phase Shift - 0.25° Typical
- Removable Leg - Easy To Install
- 5A, 10A to 150A Ranges
- Wide Bandwidth - 50Hz to 1KHz
- Excellent Low Current Sensitivity
- Mounting brackets available



AC VOLTAGE OUTPUT TYPE: An internal voltage setting resistor sets the full scale output voltage to 100mV, 250mV, 333mV, 500mV or 1000mV -- this resistor also serves as open circuit shock protection for the installer. The removable leg contains a lapped spring loaded core that mates with the precision core in the main housing. Phase displacement is adjusted to be within 0.25°.

AC CURRENT OUTPUT TYPE: The customer is required to provide the output resistor. Internal, back-to-back zener diodes are included for open circuit protection. Since the output current is very low, small 1/4 watt resistors can be used for the "burden" resistor. Due to the core size, the turns-ratio must be high - 1000, 2000 or 3000:1 as standard.

Specifications:

Input Current	AC current, 60Hz sinewave, single phase - CT range is from 1% to 200% of input (For the 5A model, the dynamic range is 25 times 5 Amps)
Voltage Rating	600VAC - tested per UL506
Interface Impedance	Minimum of 50,000 Ohms resistive - contact factory
Output (AC)	100, 250, 333, 500 or 1000mV / Turns-Ratio 1000:1, 2000:1 or 3000:1
Output Resistance	Voltage type: <1000 Ohms depends on range Current type: Depends on burden
Ratio/Linearity Accuracy	Voltage type: 0.5% full scale, +/-0.5% range Current type: Depends on burden
Phase Displacement or Shift	Voltage type: 0.25° or less @ 60Hz Current type: Depends on burden
Phase Connection Relationship	White wire positive with arrow towards source of current
Bandwidth	40Hz to 1000Hz
Temperature Range	-20°C to +55°C
Temperature Coefficient	Less than 0.05% deviation in output voltage from -20°C to +55°C
Construction	Plastic ABS UL94-VO case -- removable leg uses two knurled nylon screws
Lead Wires	8' twisted black and white, 22AWG, UL1015
Mounting Hardware	side mount or end mount (see drawings pg.2)

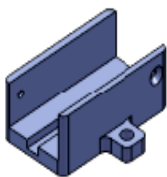


Figure 1 SMLN2



Figure 3 EMLN2

